



ART WITH TIME MIAMI

MIAMI | DECEMBER 8-10



EXPERIENCE GUIDE

GUIDE CHECKLIST

WELCOME TO ART WITH ME MIAMI

Everything you need to know and more!

- 2 Welcome
- 2 Download the Art With Me Official App
- 3 What to Expect
 - 3 Art With Me
 - 3 Dance With Me
 - 3 Breathe With Me
 - 3 Eat With Me
 - 4 Play With Me
 - 4 Care With Me
- 5 Festival Map
- 6 Transportation
- 8 Essential Information
- 8 Box Office
- 8 Re-Entry
- 8 Table Service
- 9 Press & Media
- 9 Ticketing Information
- 10 Cashless Payment
- 10 The Line Up
- 12 Allowed and Prohibited Items
 - 12 PROHIBITED ITEMS:
 - 12 ALLOWED ITEMS:
- 14 Sustainability



WELCOME

Welcome to the official experience guide for Art With Me Miami – a multi-day festival full of art, music, wellness, food, immersive installations, and many more surprises!

Download the Art With Me app for complete access to lineups, schedules, and updates! This is the only place to find the latest times and locations for all our activities – 24 hours a day, all three days.

Download the Art With Me Official App



WHAT TO EXPECT

Art With Me is an international arts, music, and culture festival which serves as a conduit of transformation: the artist transforms their inspiration into an experience for the viewer, and the viewer transforms upon exposure to art and returns to their daily life with a new understanding. Art With Me is centered around six core pillars: Art. Dance. Care. Breathe. Play. Eat.

Art With Me

By bringing together artists from around the world, inviting the local community to participate, encouraging interaction with the installations, and engaging with the workshops, Art With Me prepares attendees for a creative odyssey of self-discovery. Art With Me is a space for individual growth to feed community growth, resulting in richer ideas and increased receptivity.

Care With Me

Offering environmental, social, education activities, workshops, and discussions, Care With Me invites attendees to play a part in creating the world we want to live in. Together we will contribute to something greater than ourselves and make a better world for us and future generations.

Play With Me

Skilled instructors provide activities curated for children of all ages and families and teach skills like activism, emotional bravery, and balance so they become daily rituals. Play With Me is an opportunity to inspire future generations, to develop children's creative expression, and positively impact the rest of their lives.

Dance With Me

Music is a universal language that connects us all, bringing communities together and diffusing tensions. Rhythms and movement in the body have the power to heal and give us tools for self-expression and emotional growth. By not limiting genre or regional focus, attendees are exposed to different cultures, sounds, and movements.

Breathe With Me

Surrounded by the local landscape, a wide array of wellness activities and interactive events reset the mind and body. Yoga, dance therapy, meditation, sound therapy, drum circles, and ancient traditions are woven together to give you access to the mind and heart in a meaningful and even spiritual way.

Eat With Me

Food is possibly the most accessible form of creativity, and Eat With Me invites attendees to share a meal and experience as a community fresh, natural, local ingredients – sustainably sourced and artisanally crafted.

ART WITH ME

2023

MIAMI

MIAMI | DECEMBER 8-10

FESTIVAL MAP



RESTROOM



MEDICAL



ENTRY / EXIT



EMERGENCY EXIT



GUEST SERVICES



TICKET BOX OFFICE



STAGE



TENT



PARKING



RIDE SHARE



SEAQUARIUM PARKING SHUTTLE STOP



WATER REFILL



FOOD



BAR



PREMIUM PASS LOUNGE



VIP TABLE SERVICE



ART

1. Primordial Goddess
2. Seed of Life
3. Ecstastic Dohme
4. Molecule
5. Artist Galleries
6. Emergence
7. The Doors Of Perception
8. Energy
9. Heart Hug
10. Sophiene
11. Dragon
12. TBD TBD TBD
13. Modern Art Therapy
14. Paint Spiral
15. Wish For Peace



TRANSPORTATION

Art With Me Miami is held at the
Historic Virginia Key Beach Park
4020 Virginia Beach Dr,
Miami, FL 33149

Rideshare

Avoid the hassle of waiting in parking lines with rideshare services. Rideshares will be able to drive you straight to the festival for convenient access to the #ArtWithMeMiami box office!

Parking

Parking at the Historic Virginia Key Beach Park is EXTREMELY LIMITED and will be available on a first come first serve basis for **\$35/day**.

Overflow parking is available across the highway at the Miami Seaquarium just across Rickenbacker Causeway at the Miami Seaquarium for **\$30/day**. Shuttles will run on loop from the Miami Seaquarium to the Art With Me Miami box office (3 min drive).

The Seaquarium is located at:
4400 Rickenbacker Causeway,
Miami, FL 33149

Please note there is No Overnight Parking!

BOAT ARRIVAL INSTRUCTIONS

1. Anchor at location – per below photo, stay INSIDE the red dash-lines:

2. Upon arrival, send a text message with the following info to (305) 204-0552. Please copy & paste the below template and include all necessary information when sending text message:

Make of boat:

Size of boat:

Name of boat:

Number of passengers you need shuttled:

3. Our captain will respond to your text message with his ETA.

4. Make sure your boat is anchored before the shuttle arrives to ensure a smooth pickup.

5. Wait for your pickup :)

6. After your Water Taxi drops you off at Sunset Cove (Miami Seaquarium), please have \$100 PER BOAT in cash or Zelle ready for Water Taxi Fee upon arrival (includes Roundtrip Water Taxi service). This cost is PER BOAT, NOT PER PERSON.

7. From here, you can take our Miami Seaquarium Parking Shuttle which runs on loop during festival hours. If there is heavy traffic, or you prefer to walk, it is 15 minutes (0.5 miles) to the Art With Me Box Office / Festival entrance from the Sunset Cove Marina.

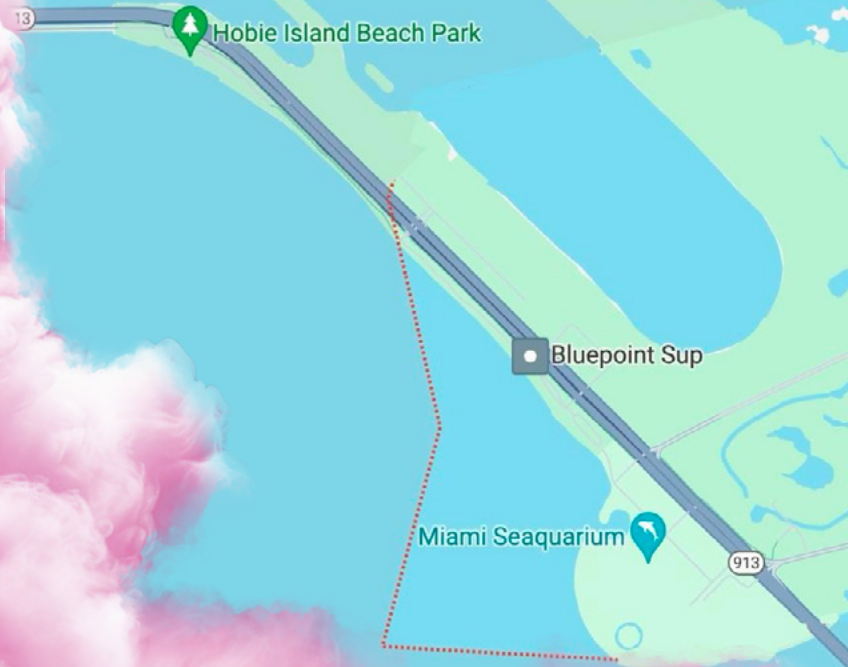
Things to keep in mind:

• Water Taxi can only carry 9 passengers MAX at a time.

For groups larger than 9 people, it will take more than one trip to get your passengers onto the dock.

ESTIMATED turnaround time is anywhere from 15-45 min

• Expect a delay if multiple yachts are arriving at the same time





ESSENTIAL INFORMATION

Festival Hours

Friday: 4 PM – 3 AM
Saturday: 2 PM – 2 AM
Sunday: 11 AM – 11 PM

Box Office

Tickets can be purchased at the Box Office located at the entrance of the festival (unless sold out). If you would like to upgrade your ticket, you can do that at the box office, too!

Tickets purchased through our website or Tixr will be redeemed at the Box Office using the QR Code issued at purchase. Just follow signs to the correct Box Office entrance and make sure to have your mobile ticket out and ready to scan!

Box Office Hours

Friday: 3 PM – 2:30 AM
Saturday: 1 PM – 1:30 AM
Sunday: 10 AM – 11 PM

Re-Entry

Re-entry is permitted up until 10pm. After this time, re-entry will not be permitted.

Table Service

Table service is available at The Key Beach and Kiss & Fly stages on Friday and Saturday. For more information on pricing and reservations, please reach out to Tables@artwithme.org or text: +1 (805) 746-5480.

If you have reserved a table for Art With Me, you can forgo the Box Office and head directly to the VIP Table Check-in Pavillion for your reservation and redeem your party's festival credentials.

Press & Media

Press and Media check in is at the VIP Table Check-In Pavillion, which is the building to the left of the Box Office. All camera equipment must be approved by Art With Me Management at least 48 Hours in advance and no exceptions will be made for unapproved media or equipment.



TICKETING INFORMATION

General Admission

General admission tickets includes access to:

- Art exhibits, workshops, and installations.
- Live musical performances.
- Wellness practices and workshops.
- Curated family and children's activities and events.
- Panel discussions and talks with a focus on education, creativity, inspiration, wellness, mental health, community, and environment.
- Donation to the Care With Me Foundation.

Please note that tickets are non-refundable, but unused tickets are eligible for transfer at the box office. If transferring, both parties must be present with valid forms of identification. If you are unable to go to the Box Office, contact info@artwithme.org for instructions.

Premium Admission

Includes all General Admission experiences, plus:

- Dedicated Premium Access only restrooms.
- Access to preferred viewing areas at music stages.
- Exclusive Premium Access bars and food vendors.
- Quicker check-ins at the dedicated Box Office entrance.

If you purchased a "before" ticket, make sure to redeem your ticket at the Box Office before the designated time or you will be charged the full face value of the ticket at the door!

Children

Kids under 12 enter the festival for free with proof of age! Art With Me is a family-friendly event with an abundance of community programming thoughtfully curated for people of all ages. We are more than just a music festival, we offer opportunities for inspiration around every corner. That being said, there are some areas that are restricted to 21+ and we encourage those with little ones to plan accordingly. Hearing protection and supervision is encouraged!

Tickets are non-refundable, but unused tickets are transferable.

If you are transferring to another person, both parties must be present at the Box Office with valid forms of ID.

Cashless Payment

Hate waiting in line for drinks? Us too! AWM has partnered with Billfold to bring you fast, contactless payment at all bars onsite!

How it works: You will receive an RFID (radio frequency identification) wristband at the Box Office, and then proceed to connect your credit card to your wristband at the Billfold activation center. Once your payment is connected, you'll be able to pay for all bar purchases with use of your wristband. With Billfold's digital wallet, you will be able to switch cards, set spending limits, and receive digital receipts so you can easily track your payments.

*Craft and Food vendors will require a physical credit or debit card payment. There will be NO ATMS onsite.



Protected Payments

You're protected! Credit card payments via RFID wristbands are PCI-compliant. Your sensitive information is not stored on the wristband itself; it "lives" in a PCI-compliant vault operated by our payment processor, which means it's not directly accessible to either Art With ME or Billfold.

Opt-In for Email Receipts

Receipts will be directly sent to you! That's alright! Simply visit the Info Booth or the Billfold Activation Tent to re-register your credit card; remember to opt-in for email receipts and check your spelling. If you need to find receipts after the event, you can email support@billfoldpos.com.

Connect the Whole Family

If you want to link the same bank card to multiple wristbands, you can repeat the activation process for each wristband. This allows you explore and move freely throughout Art With Me with the ability to keep track of your party's spending with digital receipts.

The Line Up

Use the Art With Me app to get the most out of your experience!

Map: Explore different activations guided by our interactive map; see where you are, where you ought to be, and where you should go after that. Search for what you need, and locate the things that matter most.

Program: Find out what's happening, when it's happening, and where.

My Schedule: Customize your experience by adding all your favorite performances and activities to your own program, and share it with your friends so nobody misses a moment.

Art: Experience dozens of experiential art installations including Large-Scale Art, Interactive Artworks, Sculptures, Art Galleries, Live Performances & More!!

Creators: Explore the full lineup and find information about every activity across our six pillars: Arts, Music, Wellness, Kids & Family, Culinary Experiences, Talks & Workshops & Sustainability.



Where to get information or help onsite:

- The Information Booth, located near the Healing Village: whether you need directions to an activation or help with your RFID set up, the Info booth has you covered! You can even upgrade from GA to Premium without having to haul it back to the Box Office.
- Guest Services staff will be floating around the festival. Ask them anything!
- The Box Office is a great place to get general information before entering the festival.
- Security will be pretty easy to spot. If something feels off, please notify Security or the nearest festival staff member to radio for help.



ART WITH ME



MIAMI BASEL WEEKEND | DECEMBER 8-10

FRIDAY DEC 8

UNDERWORLD

ABC ORDER

DAMIAN LAZARUS | **LP GIOBBI** | **MINDCHATTER** | **OVERMONO** (LIVE)
ALLEN HULSEY & BEAR KITTAY | **APACHE** | **ATISH** | **EAST FOREST** | **ELI LIGHT**
GLAUCO DI MAMBRO | **ISAIAH MARTIN** | **M.O.N.R.O.E.** | **MURMUSICA ENSEMBLE**
VANJEE | **WESLEY RAZZY** | **YOKOO** | **YUSF OSIRIS**
AFROBETA | **BUSHMAN** | **GOLD DUST** | **JUKE** | **KILL THE ROBOT**
LUIS RODRIGUEZ + STELLA | **ROHAN ALYAN & MAZIN**

SATURDAY DEC 9

POLO & PAN

ABC ORDER

CHANNEL TRES (DJSET) | **JAN BLOMQVIST** (LIVE) | **LEE BURRIDGE** | **SANGO**
ANTHONY MIDDLETON | **ELEPHANT HEART** | **FRANCESCA LOMBARDO**
JULIA SANDSTORM | **MAGA** | **MATT CAINES** | **SHAIT** | **TIM GREEN**
TOMMY RAFFA | **WILD DARK**
ADIOS | **ALEHHO** | **ALEXA** | **CORNELIA** | **DESERT SAIL** | **ERIC CHARLES** | **FARRAH SABADO**
FRANZYNE | **ROLL'D WHISKEY** | **ROX REVOLT** | **TAMBOKA** | **TYREGUII**

SUNDAY DEC 10

JAM WITH ME: ELEW & FRIENDS

NICO STOJAN | **PARALLELE** | **SPECIAL GUEST**
DIFFER & KIKE ROLDAN | **GAVLAK** | **GOLDEN** | **RADER**
(N)EW (J)AZZ (U)NDERGROUND | **ABEL** | **ANDROMEDA TURRE** | **AXATPE** | **CAPE UNIVERSAL KIDS**
CRISTAL POWER & NICOLE GALLAMINI | **DJEN & MARY JANE** | **DMEYER & MINDGAZM** | **FURBZZ**
INSOMNIA & NICO MOON | **NICHOLAS PETRICCA** | **OVEOUS** | **STARFOX AND ION**

STAGE PARTNERS

ALL DAY I DREAM



DO NOT
SIT
FURNITURE



DISTRIKT

Lost & Found

Lost and Found is located at the Information Booth near the Healing Village during operating hours. All lost and found items will be locked during non-operating hours and available for retrieval the following day at the Box Office. You must be able to describe the lost item in detail or show proof of person when relevant.

Water Refill Stations

Our water stations provide free and clean water and Art With Me encourages attendees' use of reusable water bottles.

Medical Assistance

Safety of all is a top priority! Medical assistance will be located in close proximity to the main stage. Emergency Medical and Fire rescue personnel will be onsite and ready in the event of a medical emergency.

ADA

Art With Me strives to provide accessibility for all attendees, including those with mobility challenges. We welcome guests to use personal mobility aids like wheelchairs and scooters. The event venue features accessible pathways to ensure easy navigation for people with mobility disabilities. Additionally, all VIP/Premium areas meet ADA compliance standards. If you need ADA assistance, please inquire with the Box Office Management Team.

Emergency Plan

Please refer to the Official Art With Me App for real-time updates and push notifications related to emergency situations, evacuation instructions, and severe weather updates.

Restrooms

Restrooms will be located near the main entrance, and by the Play With Me programming, and the Passion Flower and Kiss & Fly stages. Feel free to ask the nearest festival staff member if you need help locating the nearest restrooms. Premium ticket holders have access to dedicated restrooms located in the exclusive Premium areas.





Allowed and Prohibited Items

Everyone will pass through security before entering the gates. Please read through our Prohibited Items list to avoid any inconvenience at entry. If you have any questions or concerns regarding our prohibited items for medical reasons, please reach out to Info@artwithme.org for more information.

PROHIBITED ITEMS:

- NO Firearms or Weapons of any kind.
- Drugs.
- Outside food or drink.
- Professional cameras (those with detachable lenses).
- Drones.
- Drug paraphernalia.
- Aerosol products.
- Glass, steel, aluminum, or metal containers.
- Air horns or noisemakers.
- Fireworks or explosives.
- Flyers, samples, or promotional materials of any kind.
- Laser pointers.
- Chairs, blankets, umbrellas, or hula hoops.
- AVPs, MODs, or Liquid Refill.
- Cartridges.
- Pepper spray or mace.
- Backpacks and bags with multiple pockets.
- Bags that are larger than 14"x15"x5" (35x28x12cm) or 30 linear inches (75cm).

ALLOWED ITEMS:

- Clean, empty reusable water bottle (No glass bottles)
- E-cigs, small vape pens, and tobacco cigarettes.
- Cameras (Please note, non-professional detachable lens cameras are not allowed).
- Chapstick, lip balm, lipstick.
- Small flags of countries/regions, 12.5 x 18 inch max size.
- GoPros (no poles/sticks).
- Mobile phones and external sun chargers.
- Sunblock (sealed/unopened).
- Eyedrops (sealed/unopened).
- Female hygiene items (sealed/unopened).
- Medication with proof of prescription.
- Makeup.
- Binoculars.
- Small single-pocket drawstring bags.
- Small purses or fanny packs.
- Hand sanitizers and small packs of disinfection wipes (sealed/unopened).
- Strollers
- Good vibes, big smiles, and lots of energy!

Sustainability

At Art With Me, we are committed to producing the most sustainable festival of our scale Miami has ever seen!

Single-use plastic and styrofoam free event!

Free water refill station!

Recycling all aluminum cans!

Composting for Life!

Waste sorters on-site to assure clean recycling!

Emphasizing the meaning of “Care With Me” to all attendees includes proper disposal of trash, food (organics) and recycling and reselecting natural elements!

Training our cleaning crews to heightened standards of maintenance and care of the event grounds!

Designing our event footprint to allow space for wildlife and respect for environmentally sensitive areas!

Informing all vendors, partners, and teams involved in Art With Me of the importance of participating in these sustainability initiatives and special ways they can “Care With Me” to support!

Hosting beach cleanups and discussions about sustainability in partnership with [@Cleanmiamibeach](#)!

Dedicating a portion of our Care With Me ticket fee to a verified carbon offsetting project and baseline carbon emission study via [@Climatefutures](#)!

Having local organization [@Eukariotamx](#) & [@Gradible](#) complete audits and reporting on the program!

In Art With Me 2021 in Miami, the Care With Me Foundation was able to properly recycle 2.26 tons of recyclables, \$12,500 was donated to the Reforestation and Carbon Offset Program, and Care With Me co-sponsored four beach cleanups!

In our Caring Villages, we host enriching family and children workshops and classes to inspire and educate our next generation. Classes range from dance, art, yoga, breathwork, and eco art creation.



ART WITH ME

MIAMI

MIAMI | DECEMBER 8-10

WWW.ARTWITHME.ORG